

Subject: Final Report
Mitchell - Highway 380 Fuel Break
To: Cynthia Abeyta
Bosque Improvement Group/MERES Coordinator

The following restoration project has been completed by the Save Our Bosque Task Force in their ongoing effort to control non-native phreatophytes and restore the native riparian plant community in the areas of the floodplain which have not been developed into other uses.



Fuel break status as of June, 2008. Work has started in April, 2009, but less than 2 days later the Bosquecito Fire started and jumped Highway 380(center). Notice arroyo has not carried water at this time.

Highway 380 Firebreak:

Extraction and mulching was started in April of 2008. Much of the salt cedar was buried because of the physical location of the project, which is in the bottom of an arroyo. An area about 250 to 300 feet wide which started at the river and extended to the east parallel to 380 about 3000 feet was treated. A small area in the NW corner of the treatment area was only mulched. Re-sprouts were treated with Arsenal in the fall of 2008 and again in the fall of 2009. Approximately 14.5 acres were treated in the first treatment.



Initial Construction



Pilot Channel Construction



After first arroyo flow



Outflow into the Rio Grande



100 yards east of picture above during first major flow



Dike constructed by Socorro County - looking west

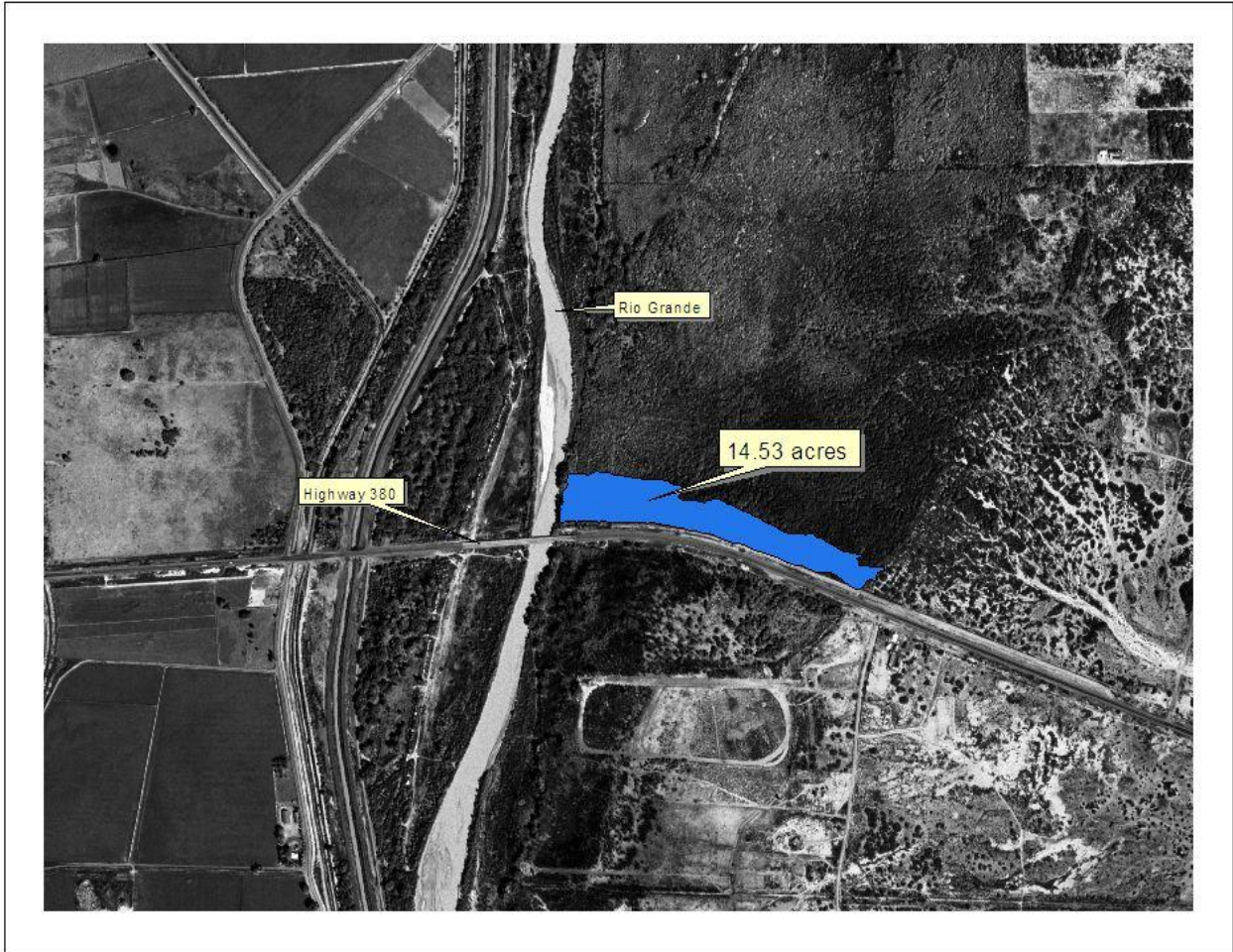


Looking East



Additional 1.3 acre extrication completed in December, 2009

Highway 380 Project



 380_racher_work.shp



An additional 1.3 acres was completed along the northeast flank in December, 2009