

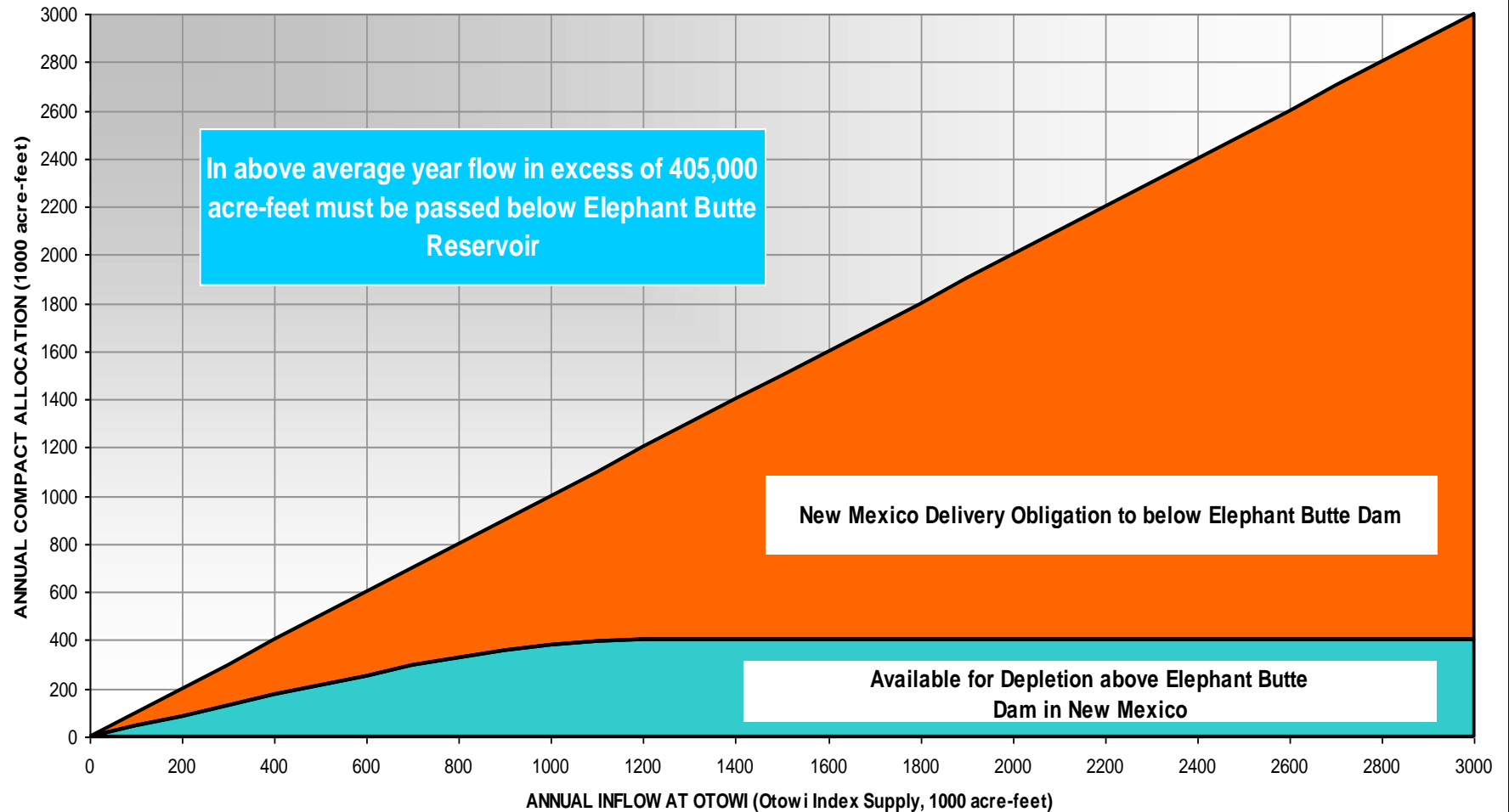
San Acacia Reach Roundtable

Rolf Schmidt-Petersen

New Mexico Interstate Stream Commission

Middle Rio Grande Compact Allocation and Obligation

ANNUAL COMPACT ALLOCATION CHART

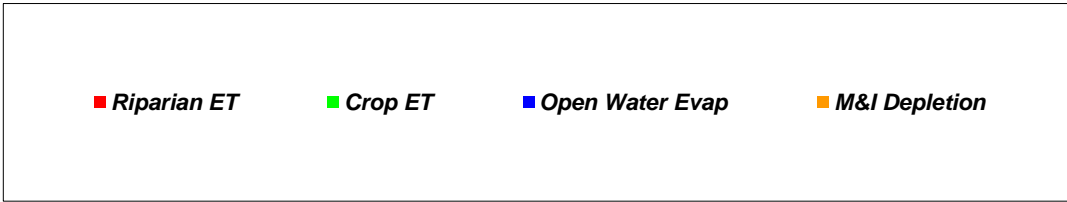
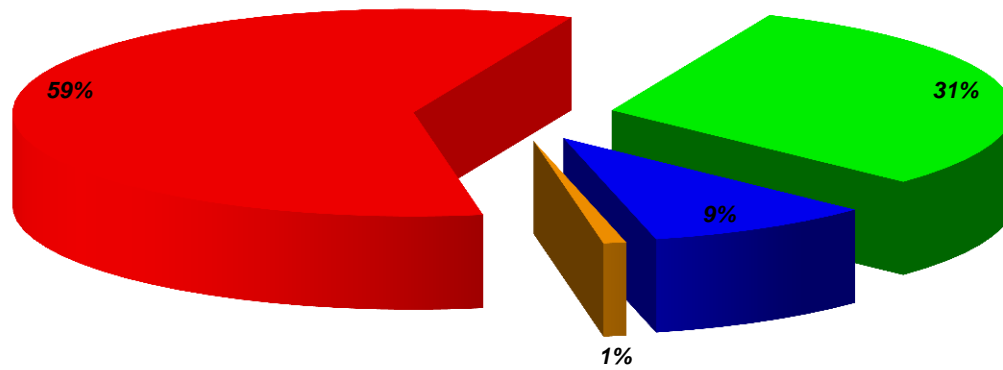


In above average year flow in excess of 405,000 acre-feet must be passed below Elephant Butte Reservoir

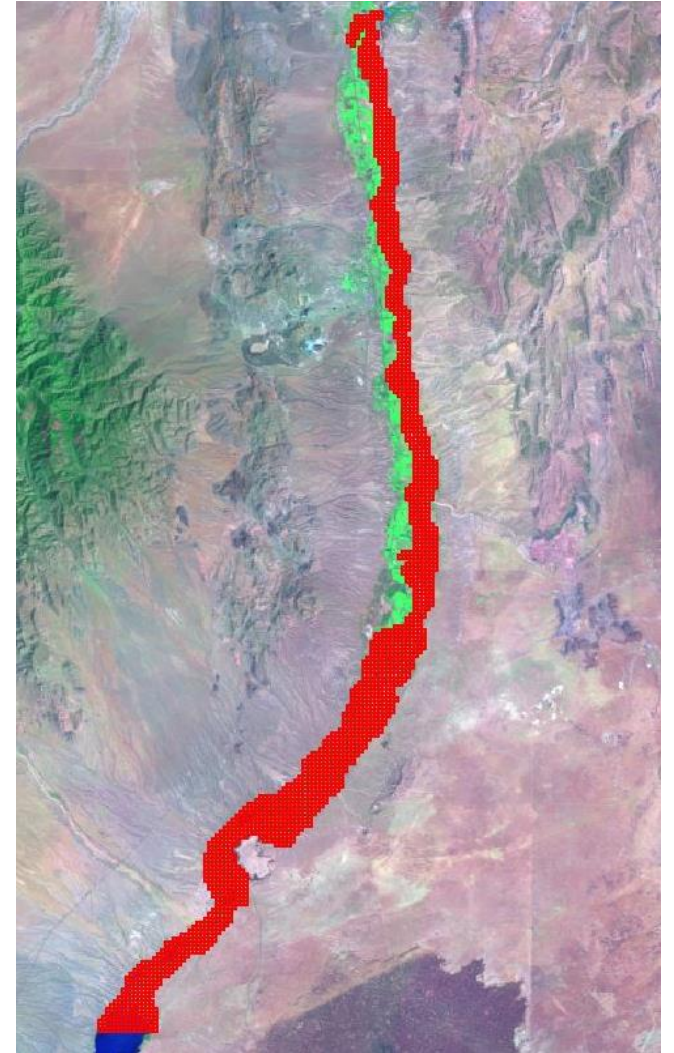
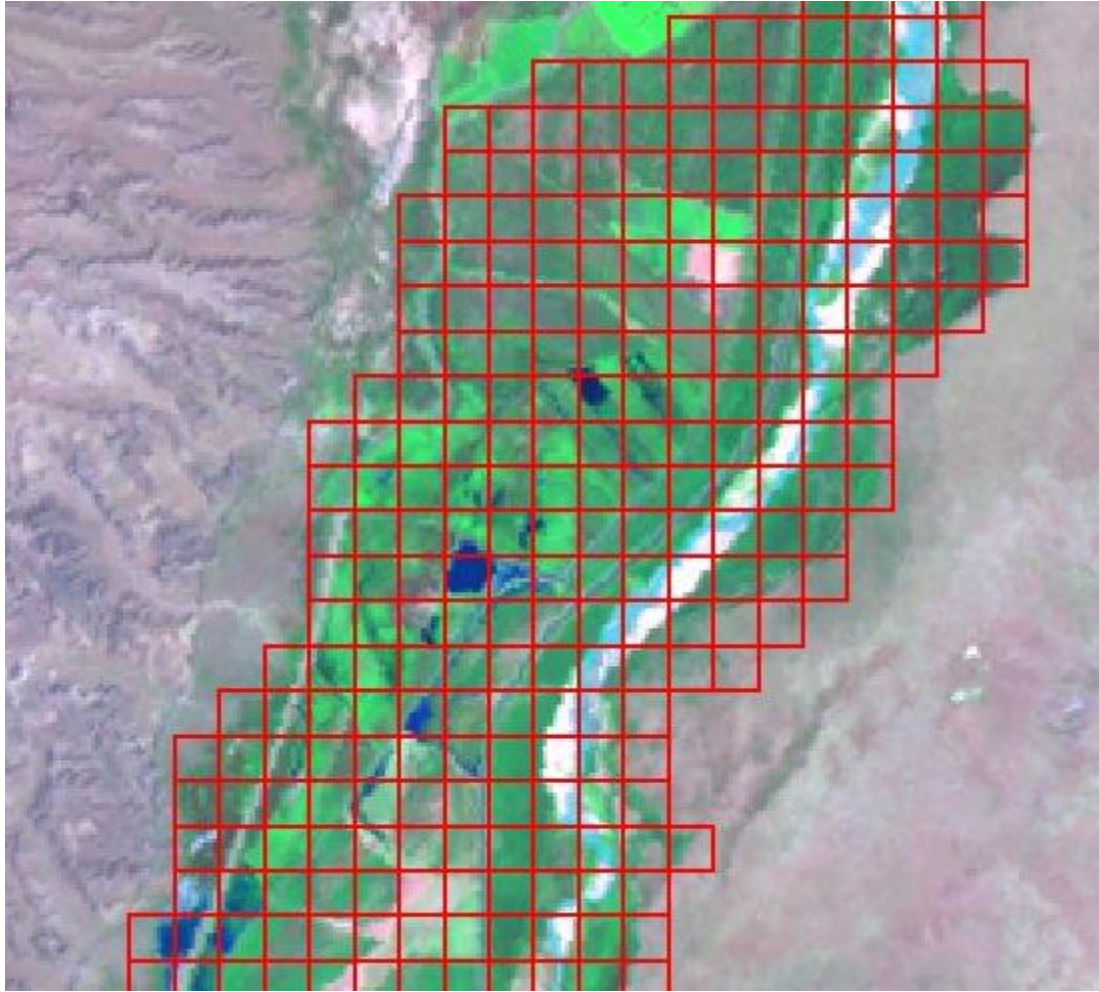
New Mexico Delivery Obligation to below Elephant Butte Dam

Available for Depletion above Elephant Butte Dam in New Mexico

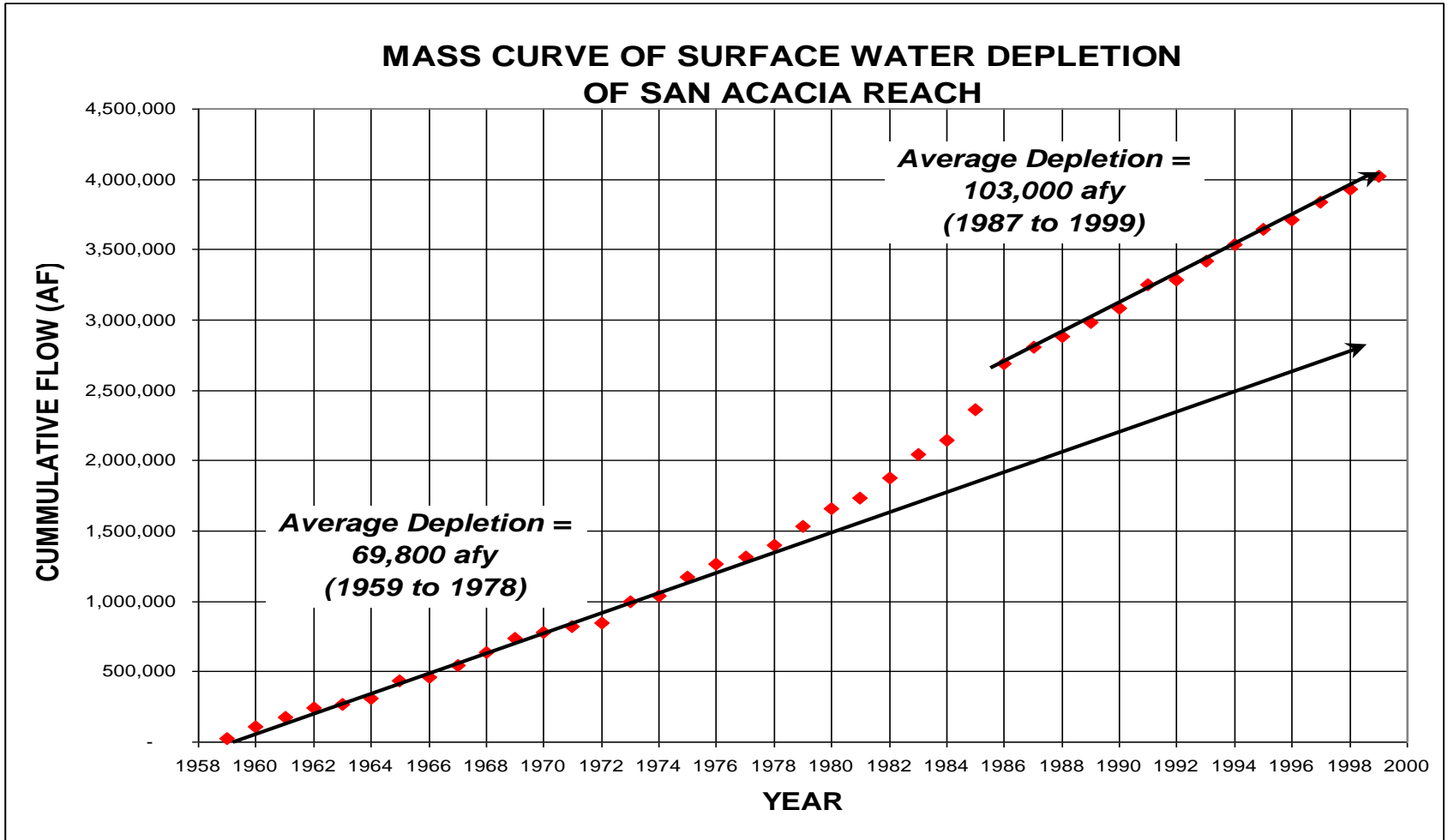
DEPLETIONS OF WATER IN THE SAN ACACIA TO SAN MARCIAL REACH



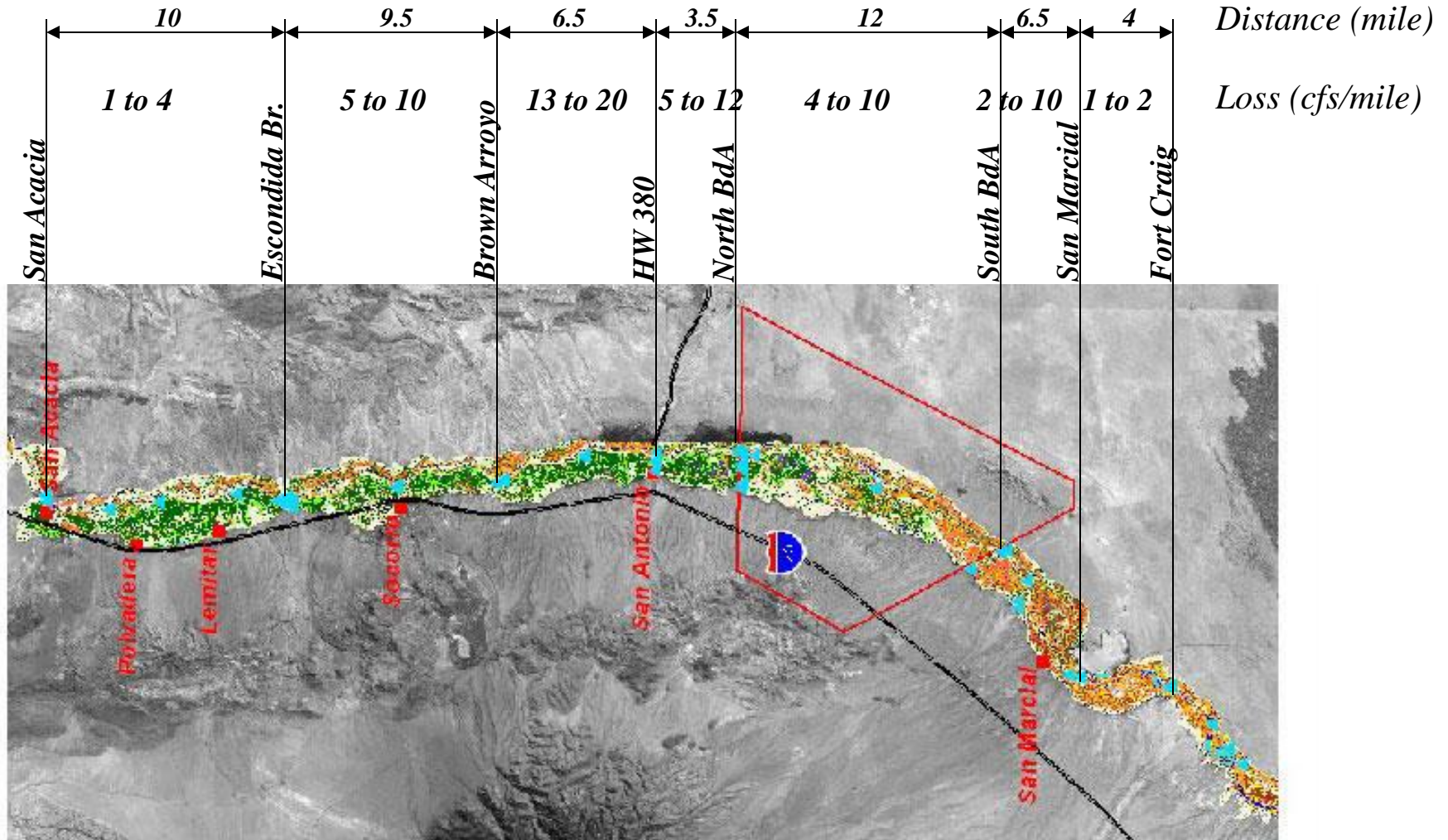
Riparian Vegetation and Irrigated Land



Surface Water Depletion



Rio Grande Seepage Analysis



Modeled Water Budget Analysis

Scenario	RIO Grande		LFCC		Socorro Main	Total		Depletion	ET
	Inflow af	Outflow af	Inflow af	Outflow af	Inflow af	Inflow af	Outflow af	af	af
No Diversion to LFCC	394,328	228,868	-	173,494	112,000	506,328	402,362	103,966	66,950
Max Diversion 500 cfs	201,459	76,933	192,869	321,218	112,000	506,328	398,151	108,177	69,330
Max Diversion 1000 cfs	174,389	54,538	219,939	343,310	112,000	506,328	397,848	108,480	69,601
LFCC up to 2000 cfs	3,055	1,656	391,273	418,276	112,000	506,328	419,932	86,396	53,096

Based on hydrology of 2001