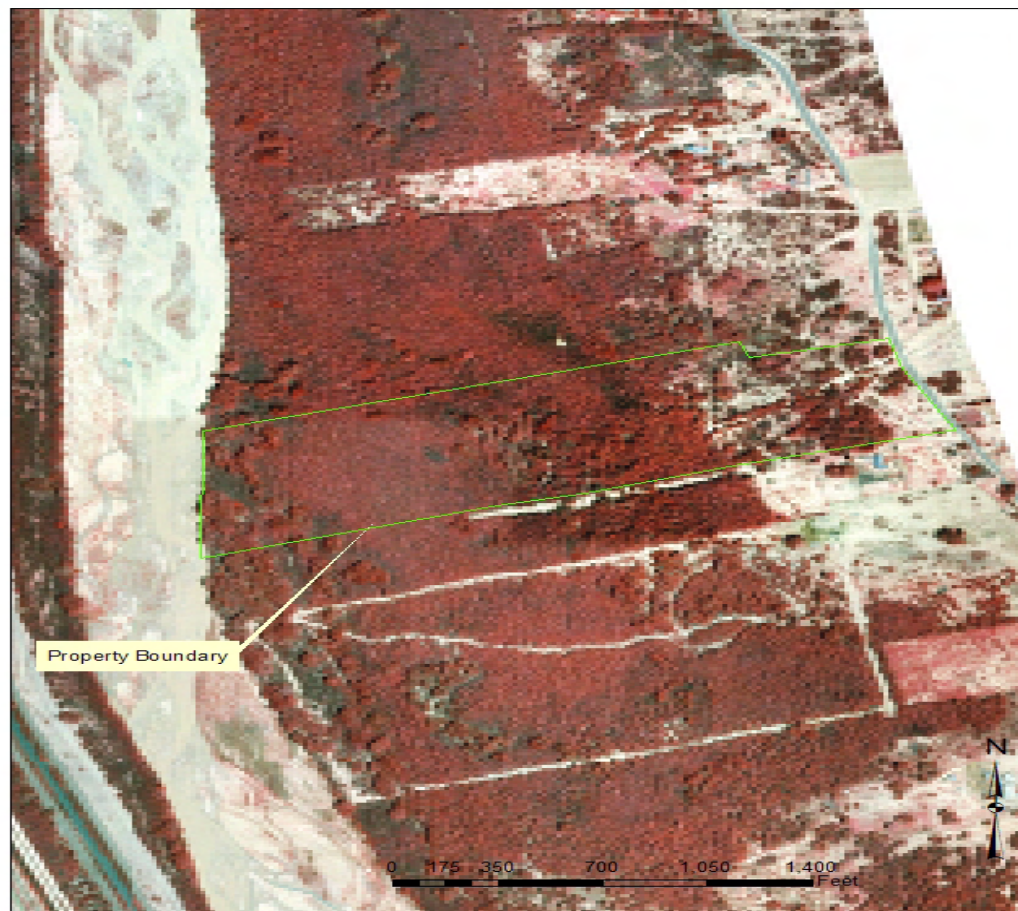
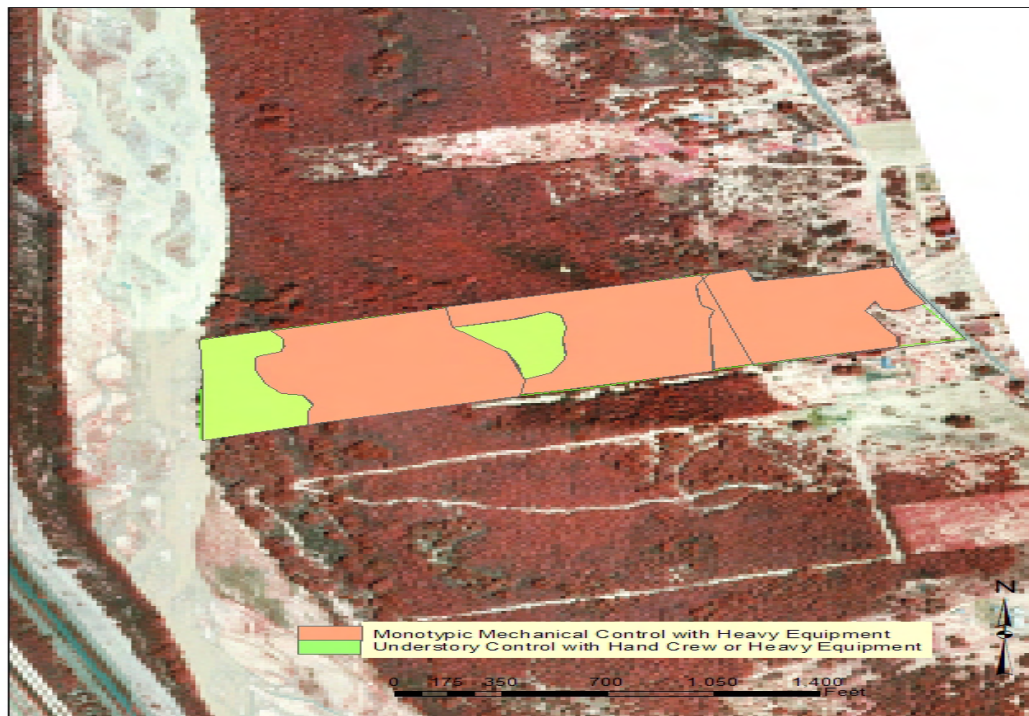


# Bottomly Bosque Restoration Project

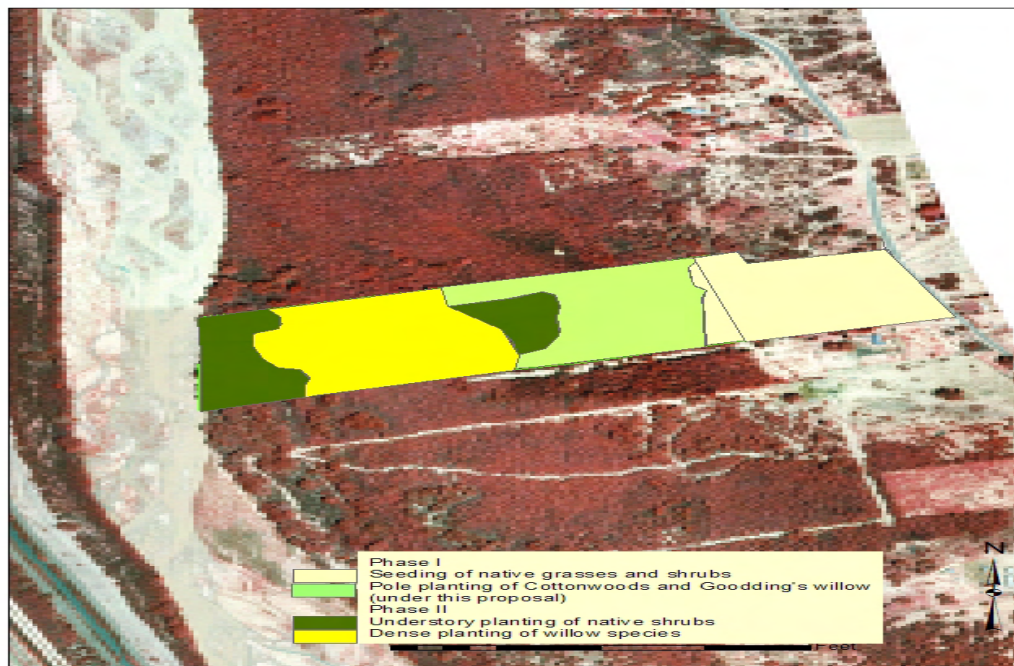
Salt cedar extraction and mulching was initiated in February of 2008 on the Bottomly property. The salt cedar controlled was a mature monotypic stand which had never burned with a 100% canopy cover. Many of the trees were in excess of 25 feet tall. The contractor cleared a path down the N side of the property so the boundary could be surveyed. The salt cedar was then cleared from the river to the east. Approximately 12.2 acres were extracted and mulched. The Socorro SWCD extracted the remainder of the salt cedar on the property and built a fence around the perimeter using Bingaman funds. Re-sprouts will be individually treated with arsenal in the fall of 2008. A detailed soil survey has been completed on the property. Restoration of the riparian plant community will proceed as funds become available.



Bottomly Property Habitat Enhancement Project Phase I  
Figure 1: Site Map



Bottomly Property Habitat Enhancement Project Phase I  
Figure 2: Exotic Plant Control Map



Bottomly Property Habitat Enhancement Project Phase I  
Figure 3: Native Plant Establishment Plan



Extraction along N. boundary of Bottomly Property



Aerial view of completed extraction and mulching.

